

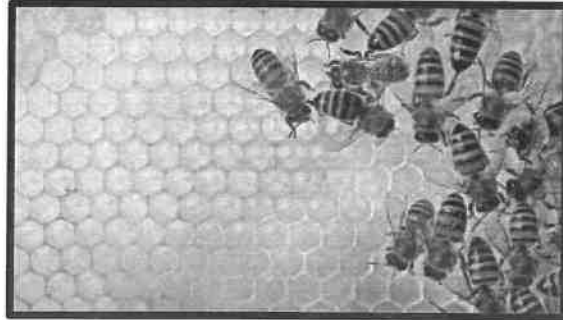
Name: _____

Behavioral Adaptations

Behavioral adaptations are ways that animals behave to help them survive in their environment.

There are four main types:

1. Hibernation
2. Migration
3. Instincts
4. Learned behaviors



An instinct is a behavioral adaptation that all animals begin life with. For example, spiders know how to spin a web and birds know how to build a nest when they are born. People are born with instincts too!

Many animals that live where the winter season is cold hibernate. Hibernation is a special kind of winter slumber. It helps animals survive the harsh winters by using food stored inside their bodies.

Migration on the other hand, is the movement of animals from one place to another and then back again. Many animals such as wildebeests and whales migrate thousands of miles each year.

Some behaviors must be learned for animals to thrive in their environment. Tiger cubs learning how to hunt from their mothers is just one example. Read on to learn more about behavioral adaptations.

Name two instincts that humans are born with:

